



**THE
BRUIN**

ADVANTAGE

at Bellevue University





A message from

Dr. Mary Hawkins

President of Bellevue University

Hello! We're really glad that you're considering Bellevue University for your college journey.

In this viewbook, you can get an idea of the programs and resources Bellevue University has to offer. But the best way to experience what we like to call the "Bruin Advantage" is to visit our campus, see what life is like here, and talk to our students, our staff and our faculty.

What you'll find, I think, is that our campus community is less about us, and more about you. Individually and collectively, we're on a mission to help you achieve your goals – in the classroom, in the workforce, and in the world.

Because more than anything, **we're here for you.**

Thank you,



what's inside

the Bruin Advantage	3
our campus community	4-7
making college affordable	8-13
support to help you succeed	14-17
popular degree programs	19
plan a campus visit	24

The Bruin Advantage is everything **you need to thrive.**

At Bellevue University, the Bruin Advantage is all about who you are and what you want and need out of your college experience.

**it's
community.**

As a student, and later as a Bellevue University alum, you'll be part of a close-knit community of people who are excited to learn, grow and succeed.

**it's
supportive.**

Bellevue University professors and staff know your name, and what's more, they know you. Whatever your goal is, we'll be there with the resources you need.

**it's
affordable.**

Going to college doesn't have to mean going into debt. We can help you find and access financial resources to make the path to your degree affordable.

**it's career-
ready.**

Our academic programs are designed with an eye on your future. Individually and collectively, our aim is to help you build a career and make an impact.



"I only felt like I genuinely belonged once I came to Bellevue. In high school, it felt like I was 'boxed in' or only belonged to a particular clique. After being here for a few years, I have realized I am more than just an athlete. I am a student, a creative, a leader, a good friend, and a bright light. Even during hard times, professors and my newfound friends made it a priority to help me, something I had never experienced before."

Aminah Hall

Alumni 2025, Sport Management & Communication Studies

want to fit in? and stand out? this is that place.

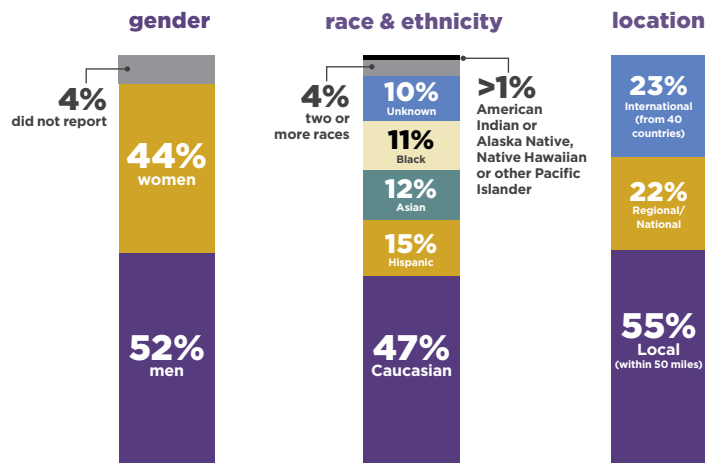
When you set foot on the Bellevue University campus, you become part of a strong community. That's because our university is sized right to ensure you have an experience that's both authentic and personal, and also full of new friends and opportunities so you can spread your wings wide.

apartment living

Having a roommate (or three!) is one of the best ways to make the most of college. Our student apartments on the south end of campus are fully furnished, include all utilities, and your own bedroom.

small class sizes

Classes have one faculty member and generally no more than 24 students. This ensures you receive individualized attention and get to know your classmates.



Statistics reflect the number responding to a student survey in 23/24

dining services

Located in the Student Center on campus, our Bruin Dining provides a delicious variety of options. Meal plans are available for purchase on your student account, or you can pay for meals as you go.

BRUIN Café

Bruin Café is the main campus cafeteria, offering daily specials, plus soup and salad bars.

BRUIN Market

Bruin Market has a wide array of grab-and-go food items and basic necessities.

BRUIN Blend

Bruin Blend is a coffee bar offering coffee drinks, tea, smoothies and breakfast and lunch items.

clubs & activities

You can join a club or organization based on your academic program or your personal interests. Getting involved on campus is one of the best ways to make the most of your college experience.

athletic opportunities

The Bellevue University Bruins are a top-ranked contender in the Frontier Conference, a member of the National Association of Intercollegiate Athletics (NAIA) and compete in 14 men's, women's and co-ed sports. If you're interested in representing Bellevue University as a student athlete, go to bubruins.com/athletics/recruits.



Esports is gaining momentum

Bellevue University's co-ed Esports program is rapidly evolving into one of the most prominent collegiate Esports teams in Nebraska and the broader Midwest. In 2025, Bellevue's Esports team was ranked eighth nationally, reflecting its competitive prowess across various titles.

advantage | community



Women's

Basketball
Cross Country
Distance Track
Golf
Soccer
Softball
Volleyball

Men's

Baseball
Basketball
Cross Country
Distance Track
Golf
Soccer





you're not old. why should your campus be?

You won't find a lot of ivy or century-old brick buildings on our campus. Instead, you'll find contemporary spaces built for how people live, learn and interact with each other today.

Best of all, our campus is growing. We've constructed a new 72,000 square foot Athletics Field House. And soon we'll be undertaking major enhancements to other student support areas.

Away from campus, you're minutes away from fun local attractions, events, concert venues and restaurants.

\$30 Million
is being invested
into the Bellevue
University campus in
the next five years.



your campus



The Bruin Bunker with its deluxe gaming chairs and computers is home to the co-ed Esports squad that fields teams playing Overwatch 2, League of Legends, Super Smash Bros. and more.



The Joyce Norene Wilson Art Gallery features works by artists from BU and the local community, often showcasing student and employee works of art.



The Indoor Waterfall by the stairs in the three-story Educational Services Building is a favorite place to take photos and take a break during a busy day on campus.



The Durham Bell & Clock Tower is a 50-foot high landmark on our campus. The tower carillon plays the Westminster chimes to mark every half hour.



The Student Center designed to please a variety of tastebuds, plus a Game Room and The Bruin Blend coffee shop are located in the heart of campus.

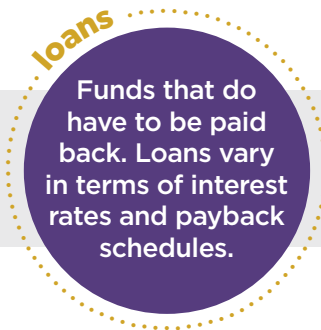
Bellevue University is affordable. **count on it.**

Pursuing a college education means making an investment in yourself for the future. Research shows that a college degree can bring you more earning potential and promotion opportunities than a high school diploma alone.

Just as important as the cost of a school, is choosing a school that's transparent about costs. At Bellevue University we're committed to helping you understand all your options and figure out the best way to pay for your education.

a full-circle approach to **financial aid**

Bellevue University understands your financial situation is unique. During your admissions process, our team will talk with you about the different funding sources that may be available to you, including:



After applying to Bellevue University, here's how to get started on your funding options:

- Complete the Free Application for Federal Student Aid (FAFSA) at studentaid.gov to see what funding you're eligible for. Bellevue University's FAFSA school code is 002538.
- Search for scholarships via CommunityForce.
- Check for eligibility and apply for VA benefits at va.gov/education (if applicable).



tuition & fees estimate – 2025/2026 academic year

This is an estimate of your annual tuition and fees for attending classes on campus beginning in the Fall of 2025 through the Spring of 2026. Bellevue University is a private and non-profit school, so tuition rates are the same whether or not you’re from Nebraska.

Tuition:	\$339 per in-class credit hour <i>(based on 28 credits per year)</i>	\$9,492.00
Fees:	Application <i>(one time only)</i>	\$50.00
	General College <i>(\$300 per term)</i>	\$900.00
Books:	\$175* flat fee per term	\$525.00
2025/2026 Estimate:		\$10,967.00

Ask us how
to get this
waived!

Please note: Certain courses may require lab fees or exam proctoring fees per class. These courses are designated in the class schedule. Visit the Tuition & Fees page on bellevue.edu for details. The total estimated cost indicated above does not reflect meals or living expenses. Fees for international students are different from the pricing noted above. Please check with your Admissions Counselor or visit bellevue.edu for more information. *Some course materials may vary, check the Bookstore page on bellevue.edu for exceptions.

transferring credits

You may be able to save money and time when you transfer Advanced Placement (AP) and Dual Enrollment credits from high school to Bellevue University. Not only will you save in credit hours, you'll also have an academic head start on your college career.

At Bellevue University, there is no limit on the number of AP or dual enrollment credits you can transfer. While many universities pick and choose what they allow to transfer, Bellevue University determines the number of credits granted to you for each course based on the college's course catalog description and our transfer equivalency guidelines.

transferring your AP credits

If you earned a passing score on your AP exam, you can earn an average of between 3 and 6 credit hours of transfer credits.

Request your AP credit information by visiting apscore.collegeboard.org/scores/ and following the prompts to select score reports.

transferring your dual enrollment credits

You must have earned at least a C- in the college-level courses you took. To transfer your credits, ask your high school counselor for assistance in requesting your dual enrollment transcripts. Or, contact the registrar's office at the college that partners with your high school.

books (+more) for Bruins

The Course Materials program provides guaranteed access to required course materials, including ebooks, lab kits or art supplies, for a very low cost of \$175 per term*. No more paying out of pocket for books or skipping materials you can't afford!

*Ask your Admissions Counselor or Student Coach about any applicable exclusions that may apply to your specific courses.



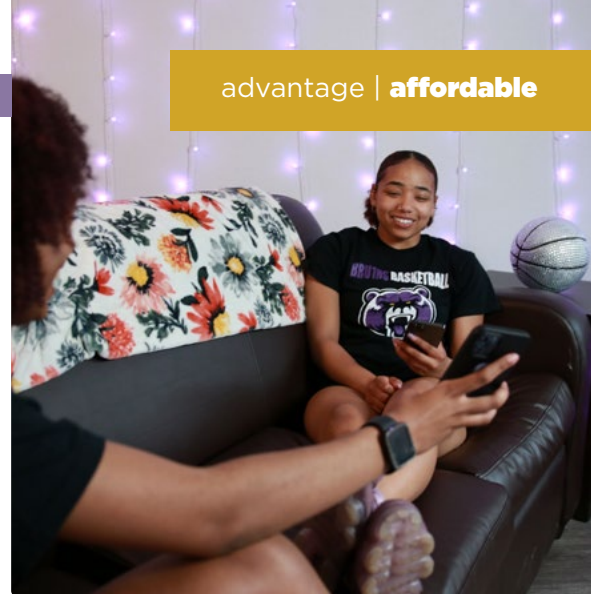
room & board pricing – 2025/2026 academic year

Bellevue University student housing provides a fun, exciting and safe living and learning environment. The pricing below is for room and board for the Fall 2025 through Spring 2026 (three-term agreement).

Room & Board\$3,745 per term

(rent + 8 meal plan and \$100 Bruin Bucks)** (single room)

** Meal Plans are required for all housing residents and included in the figures shown above. Not included in the pricing is a one-time Annual Housing Fee of \$350. For more details on housing, visit bellevue.edu/student-support/housing.



Housing residents enjoy:



Single
Bedrooms



Secured
Access Entry



Resident
Assistant
on Site



Wireless
Internet



Utilities
Included



Furnished
Apartments



3-term
Agreement



FREE Laundry
in Unit or
on Site

apply for **scholarships/grants**

Scholarships and grants are funds that you can use for education and that you don't have to repay. You can apply for scholarships and grants that Bellevue University offers, as well as other external organizations' scholarships. Then, you can combine the funds to make your education even more affordable.

you're **eligible**

All students – new and current – apply for scholarships using CommunityForce. This is a single universal application that ensures you're considered for each eligible scholarship during every scholarship award period. Scholarships may be awarded based on financial need, academic progress, program of study or a combination of those factors.

renewable **scholarships**

Bellevue University offers a number of renewable scholarships that can help fund your education for four (or five) years, until you reach your bachelor's degree.

Scan here to
find out more!



"I know my choice of attending an affordable college now will benefit me when it comes to paying less on loans later. Receiving scholarships also gives me more time to invest in myself and to focus on my studies."

- Jacob Athen
Alumni, Class of 2024



The Environment

we're here for one reason: to help you reach your goals.



At Bellevue University, your pursuit of your degree isn't something you have to do alone. Once you enroll, you'll interact with people who will provide different types of expertise, and service teams, where you'll be able to access specialized resources. This network of support exists both inside and outside of the classroom.

Academic Advising

As a new student, you'll be matched up with your very own Student Coach. This person will serve as your advisor and guide from the day you start all the way through your graduation. Each term, your Student Coach will help you register for classes, and connect you with specific people and departments who are here to help you succeed.

Accommodations Resource Center

At this center, you can arrange classroom accommodations or find help to manage temporary or chronic medical conditions or personal situations.

Counseling Services

You can get support for your mental health and well-being on campus at our Counseling Center or online via the TalkCampus app.

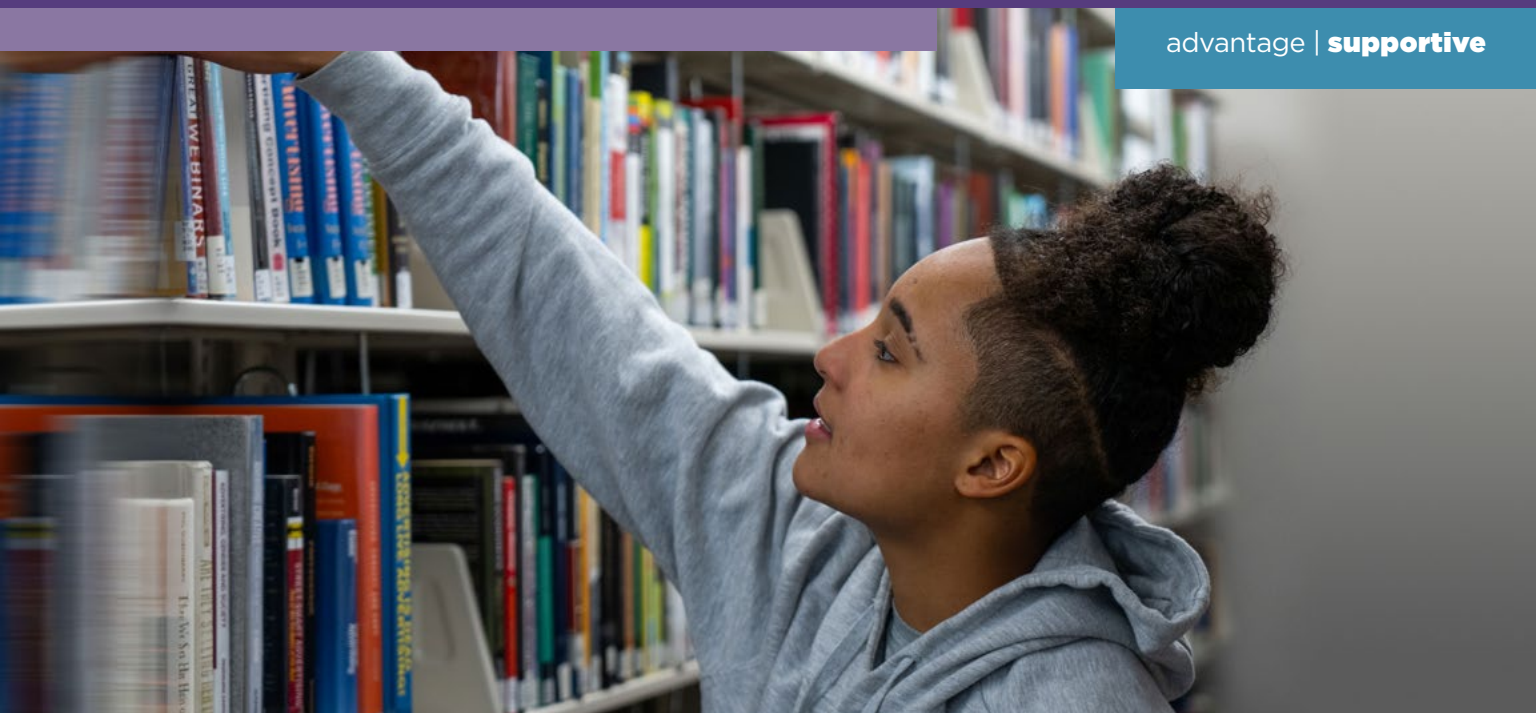
Faculty

Here at Bellevue University, you can form a real relationship with faculty who care about you as a student and as a person outside the classroom. They focus on helping you prepare for what's next for you - whether that's a class, an internship, a grad program or a career.



"The best part about my job is seeing students grow throughout their college journey. I enjoy getting to know about their goals, helping them navigate their program and all the opportunities available to them."

Leslie Lopez
Student Coach



Library

The Freeman Lozier Library offers almost 800,000 materials in a variety of formats. Access books, journals, apps and much more.

Student Life

Ask a question, get guidance and find support from team members whose number one priority is to help you acclimate and have fun in college.

Writing Center

Talk to consultants, access Grammarly and get feedback on written work.

Tutoring Services

Connect with peer tutors for free and develop strategies to learn challenging material.





“Using the connections Bellevue provided me, doing an internship has been one of the most rewarding experiences of my academic career! It has allowed me to learn more about the sport industry and expand my network, setting me up for success once I graduate.”

Breanne McMurtry
Junior, Sport Management

career services that help you get to work.

If you're looking for a job or internship while you're in school, or seeking a career opportunity after you graduate, our Career Services department can help.

Find jobs and careers

Our Career Services team uses Handshake and multiple job search websites to streamline your journey to the perfect job.

Prep for jobs

Be sure you're at the top of the consideration list with prep for effective resumes, interview best practices, career field outlook info and more.

The Experience

degrees designed for **your future.**

At Bellevue University, you can choose from dozens of degree programs (plus a variety of certificates of completion), including the popular, on-campus programs on the next page.

Every undergraduate degree program will include some general education courses that build and strengthen your basic skills and make you more employable. Every program will also include required courses that help you learn skills that transfer to a specific type of job or a particular industry. Finally, you'll choose elective courses that are related to your major or that you have an interest in.

37 + [30-72] + [18-60]

Gen Eds
(with the KSS)

Major Credits
(varies by program)

Elective Credits
(varies by program)

= 127 Total Credits

Our four 11-week term schedule allows you to move through your credits at your own pace with lots of flexibility to choose your course load. Plus, no classes on Fridays gives you more time to balance school with your personal life.

accreditation & awards

Bellevue University is accredited by the Higher Learning Commission (hlcommission.org). In addition, we have been recognized with these specialized accreditations, designations and awards.



**Over
65,000
graduates
worldwide**

**67%
residential
student
graduation rate***

**600+
students
on campus**

**3.2
GPA
residential
student
average**

*Based on residential student cohorts from 2015-16, 2016-17 and 2017-18.

we're for you.™

Business, Finance and Communication

Practically every company in the nation is looking for its next generation of leaders in areas ranging from finance to business intelligence and operations to marketing. A degree in business, finance, or communication can make you an asset for decades to come.

- Accounting
- Business Administration*
- Finance
- Financial Planning
- International Business Administration
- Sport Management
- Supply Chain and Logistics Management

Education

The Bachelor of Science in Education program has **two tracks**. One prepares to become a certified elementary teacher (grades K-6), the other prepares to be a certified secondary teacher (grades 7-12).

This experience-oriented teacher education program is structured around field assignments in classrooms where you will gain over 125 hours of practical field experience. You will also complete a semester of student teaching, which will prepare you to confidently begin your career in education.

Information Technology and Cybersecurity

Technology-related disciplines are one of the most important — and fastest growing — areas of study throughout the world. As the reliance on technology continues to grow across all fields, so does the need for skilled employees to lead in these areas.

- Computer Information Systems
- Cybersecurity

Healthcare, Pre-Med and Pre-Law

Are you interested in helping people? Whether you have your sights set on law school, or your passion is helping patients live better lives, you can prepare at Bellevue University. To get started down the path toward medical, dental, physical therapy or other health professions, choose a major with core courses in the natural sciences such as biology or health science. If your goal is law school, a history or criminal justice major can set you up for success.

- Biology*
- Criminal Justice
- Health and Human Performance*
- Kinesiology
- Psychology*



“The BU student experience is like no other because of the diversity of student backgrounds. The class environment always leads to interesting discussions and the expression of a variety of viewpoints, which enriches everyone’s understanding of the subject matter and teaches us how to empathize with others.”

Dr. Jerome Lewis
*Associate Professor,
Psychology*



faculty and settings **dedicated to students.**

Bellevue University faculty are teachers first and foremost. Unlike other universities, where many faculty concentrate on getting tenure, our faculty are focused on you and your success. Our faculty come from diverse backgrounds and they want to get to know you as an individual. They truly care about helping you learn and master the skills you need for the future.

Best of all, our faculty and instructors bring their real-world experiences into the classroom. They teach theoretical concepts, but they are also able to share their experiences working in for-profit companies and non-profit organizations. The end result is that you learn skills that you can apply.

incredible labs and learning spaces.

Courtnage Intelligence Systems Lab

The fully equipped Courtnage Intelligence Systems Lab lets you learn cybersecurity skills in a cutting-edge security and operations network environment.

Natural Sciences Labs

Multi-million dollar, fully outfitted science labs put science on display and you at the center of the experiments, research and learning.

Sustainability Lab

A 7,000 square foot learning lab, greenhouse and algae pond that brings education about sustainable practices to life.

MathX Lab

This interactive classroom puts hands-on collaboration and business tools ranging from Smart boards to Excel right into your hands.

Harper Family Foundation Integrated Technologies Lab

Here's where you can explore the "Internet of Things," drones and concepts like circuitry, coding and more.



Courtnage Intelligence Systems Lab



Natural Sciences Lab



Sustainability Lab



MathX Lab



Integrated Technologies Lab



“I feel the Biology program sufficiently prepared me for whichever step I take next. We have done many projects using both modern and classic research techniques, which allowed me to gain hands-on experience and be knowledgeable about the things employers seem to be looking for in someone with my degree. Winning this award represents all of the growth and learning I’ve achieved since starting at Bellevue and I am so thankful to my professors, Dr. Moore and Dr. Kyndt!”

Alisiara Hobbs

Alumni, Class of 2023

Winner of the “Outstanding Undergraduate Research in Biology Award” from the Nebraska Academy of Sciences 2023

amplify your skills with **new experiences.**

What you learn in your classes at Bellevue University gets really exciting when you have an opportunity to put your skills into action through personal and professional development activities like:

Research projects
with faculty and
other students

Professional
industry and skill
certifications

Personal
Enrichment
Program
(PEP) workshops

Campus
employment
roles

Internships, many
are paid, and
worth credit

Academic and
professional
conferences



Maria Pinedo Velarde
BS Business Administration

Carlos Ortega Arguelles
MS Business Analytics

College of Business students had multiple top-five finishes in the Nebraska Future Business Leaders of America (FBLA)-Collegiate Conference in March 2025 and qualified for the FBLA Collegiate National Leadership Conference June 2025.

“Participation in these business competitions is a valuable experience for Bellevue University students, they sharpen their leadership, communication and teamwork skills as they compete against their peers.”

Dr. Laurel Mitchell
Professor, College of Business



The Edge

schedule a campus visit

Want to experience the Bruin Advantage for yourself? Visiting campus is the best way to check it out.



You can meet with a program director about what your future career could look like. Talk to an admissions counselor, who can walk you through how to make college affordable. Plus, our team will tour you around campus and take you to lunch in the Student Center. **Reach out today – we can't wait to meet you!**

(402) 293-2000 | (800) 756-7920
1000 Galvin Road South | Bellevue, NE 68005



Bellevue University is accredited by the Higher Learning Commission (hlcommission.org). Bellevue University is committed to providing an environment that is free from harassment and discrimination based upon race, color, religion, sex, national origin, age, disability, genetic information, military obligations, or status in any other group protected by local, state, or federal law. The information published in this brochure is accurate for the 2025-2026 academic year and subject to change each year thereafter.

Please check with an admissions counselor or academic advisor if viewing any distributed publications outside of your attending year.

11392-0525



we're for you.™